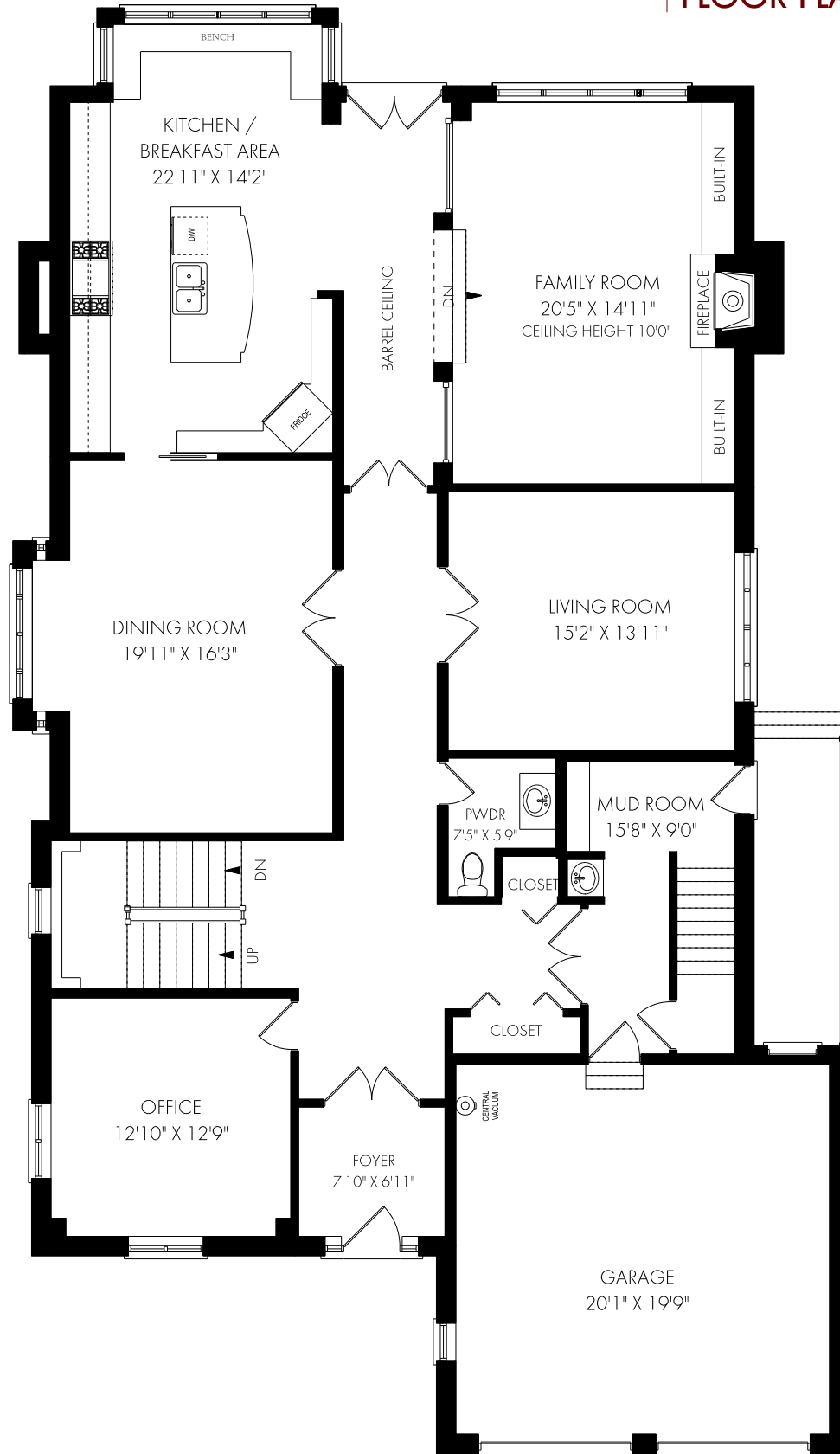


3291 Shelburne Place, Oakville

FLOOR PLAN



CEILING HEIGHT 9'0"
MAIN FLOOR - 2292 SQUARE FEET



November 9, 2022

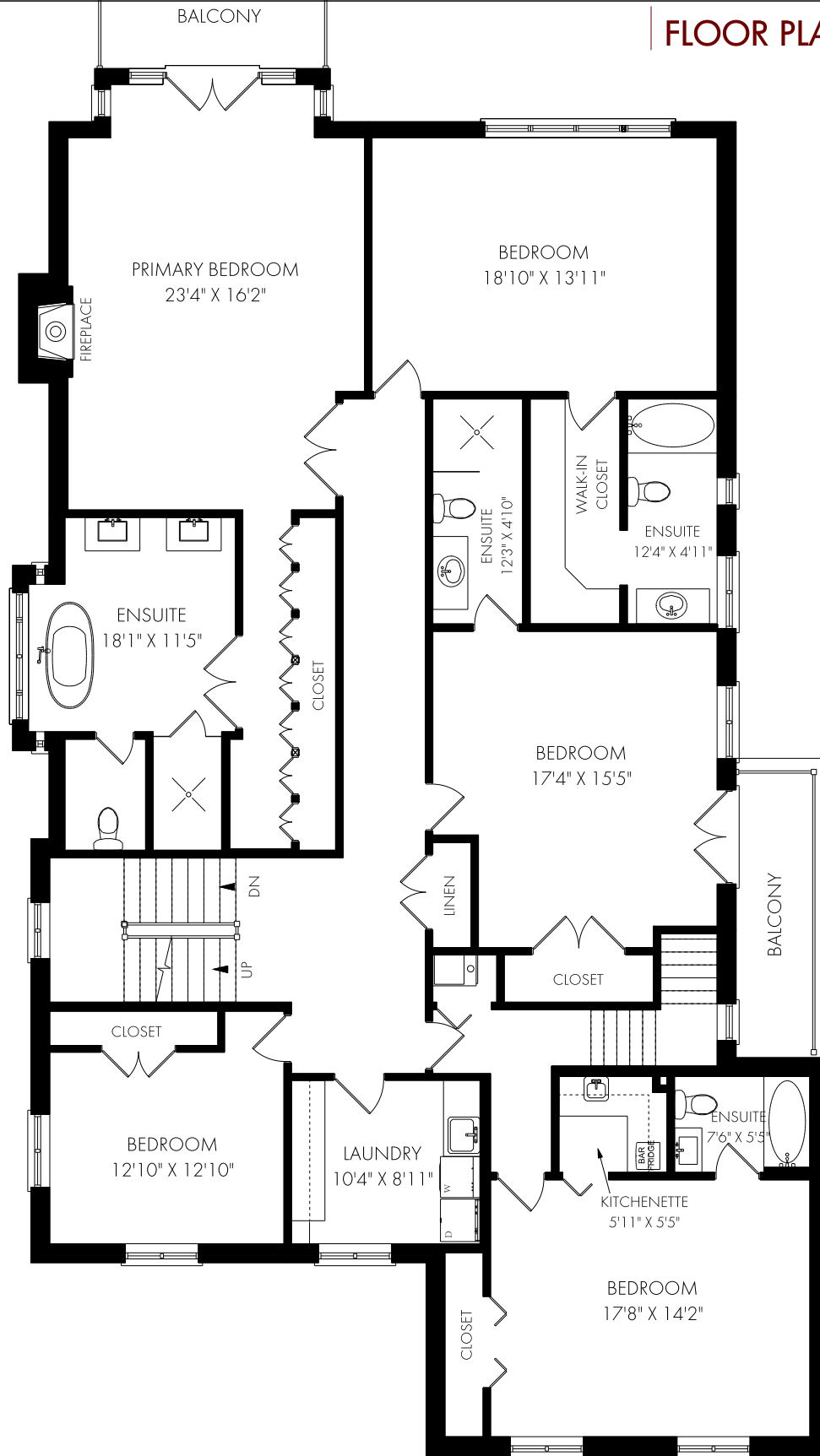
Note: Although measurements and area believed to be accurate they should be considered approximate. This drawing was prepared by Plans4U for the sole benefit and use by the client. No third party may rely on this drawing without the receipt of reliance letter from Plans4U

PLANS4U © 2022 PLANSFORYOU

PlansForYou.ca/ info@plansforyou.ca /416.999.5096

3291 Shelburne Place, Oakville

FLOOR PLAN



CEILING HEIGHT 9'0"

SECOND FLOOR - 2730 SQUARE FEET



November 9, 2022

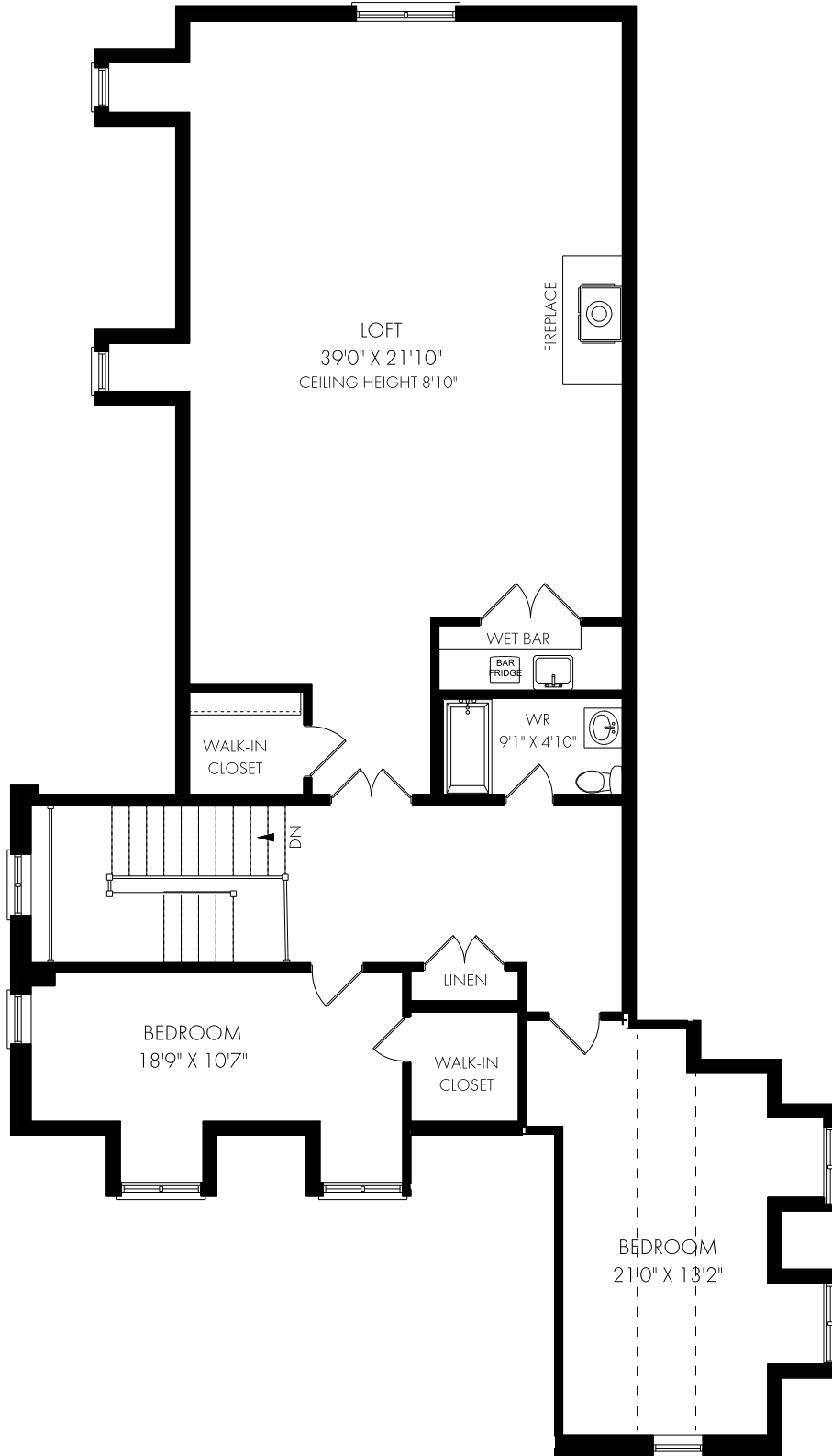
Note: Although measurements and area believed to be accurate they should be considered approximate. This drawing was prepared by Plans4U for the sole benefit and use by the client. No third party may rely on this drawing without the receipt of reliance letter from Plans4U

PLANS4U © 2022 PLANSFORYOU

PlansForYou.ca/ info@plansforyou.ca /416.999.5096

3291 Shelburne Place, Oakville

FLOOR PLAN



THIRD FLOOR - 1759 SQUARE FEET



November 9, 2022

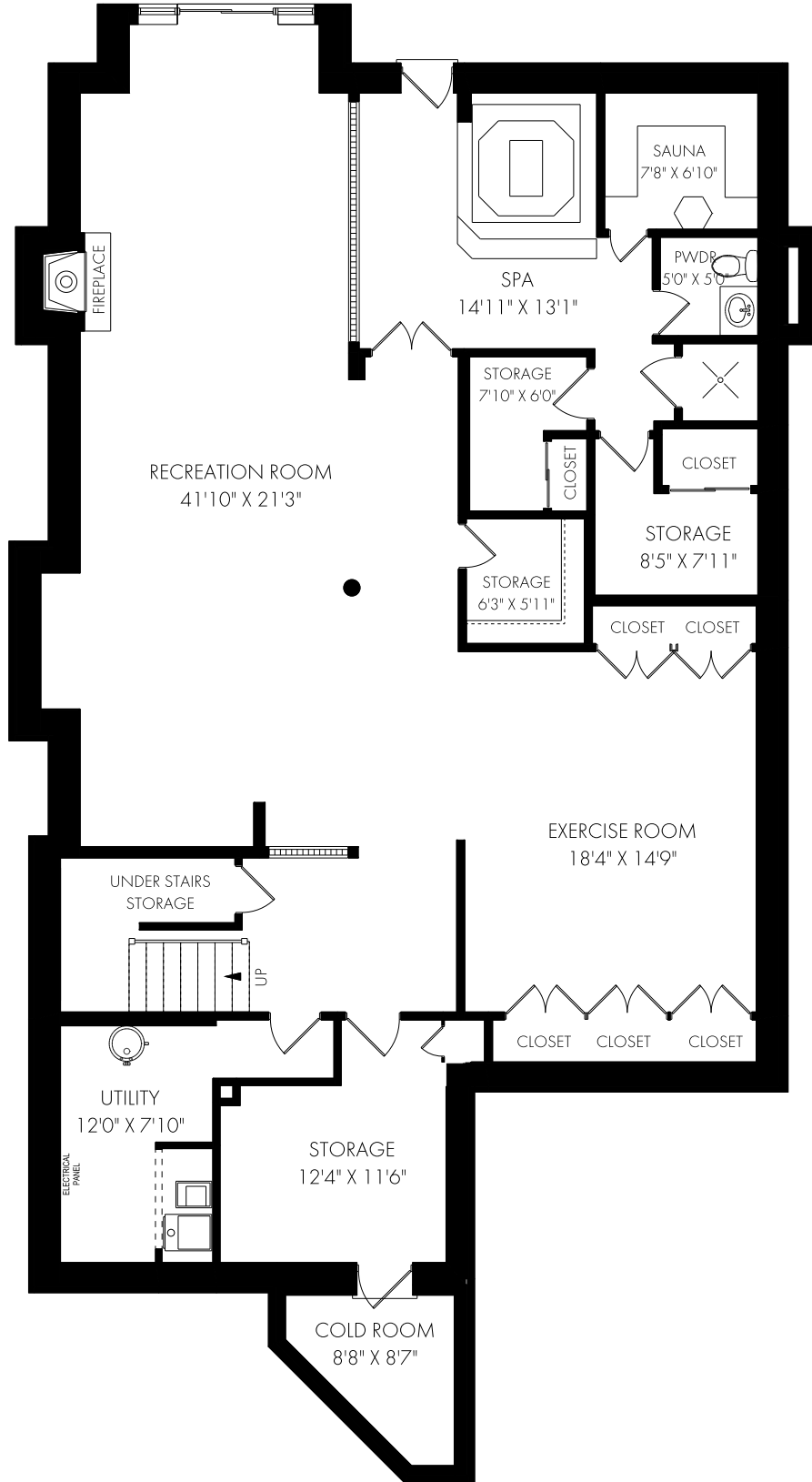
Note: Although measurements and area believed to be accurate they should be considered approximate. This drawing was prepared by Plans4U for the sole benefit and use by the client. No third party may rely on this drawing without the receipt of reliance letter from Plans4U

PLANS4U © 2022 PLANSFORYOU

PlansForYou.ca/ info@plansforyou.ca /416.999.5096

3291 Shelburne Place, Oakville

FLOOR PLAN



LOWER LEVEL - 2354 SQUARE FEET



November 9, 2022

Note: Although measurements and area believed to be accurate they should be considered approximate. This drawing was prepared by Plans4U for the sole benefit and use by the client. No third party may rely on this drawing without the receipt of reliance letter from Plans4U

PLANS4U © 2022 PLANSFORYOU

PlansForYou.ca/ info@plansforyou.ca /416.999.5096